





APPLICATIONS

AMESH Pre-Pipped bladder tanks is a complete pressure balanced proportioning system. It requires no power, other than the water pressure to ensure correct operation. The pre-piped bladder tanks are designed and constructed in accordance with ASME code, Boiler and Pressure Vessel standard, Division I latest Edition for unfired pressure vessels.

DESCRIPTION

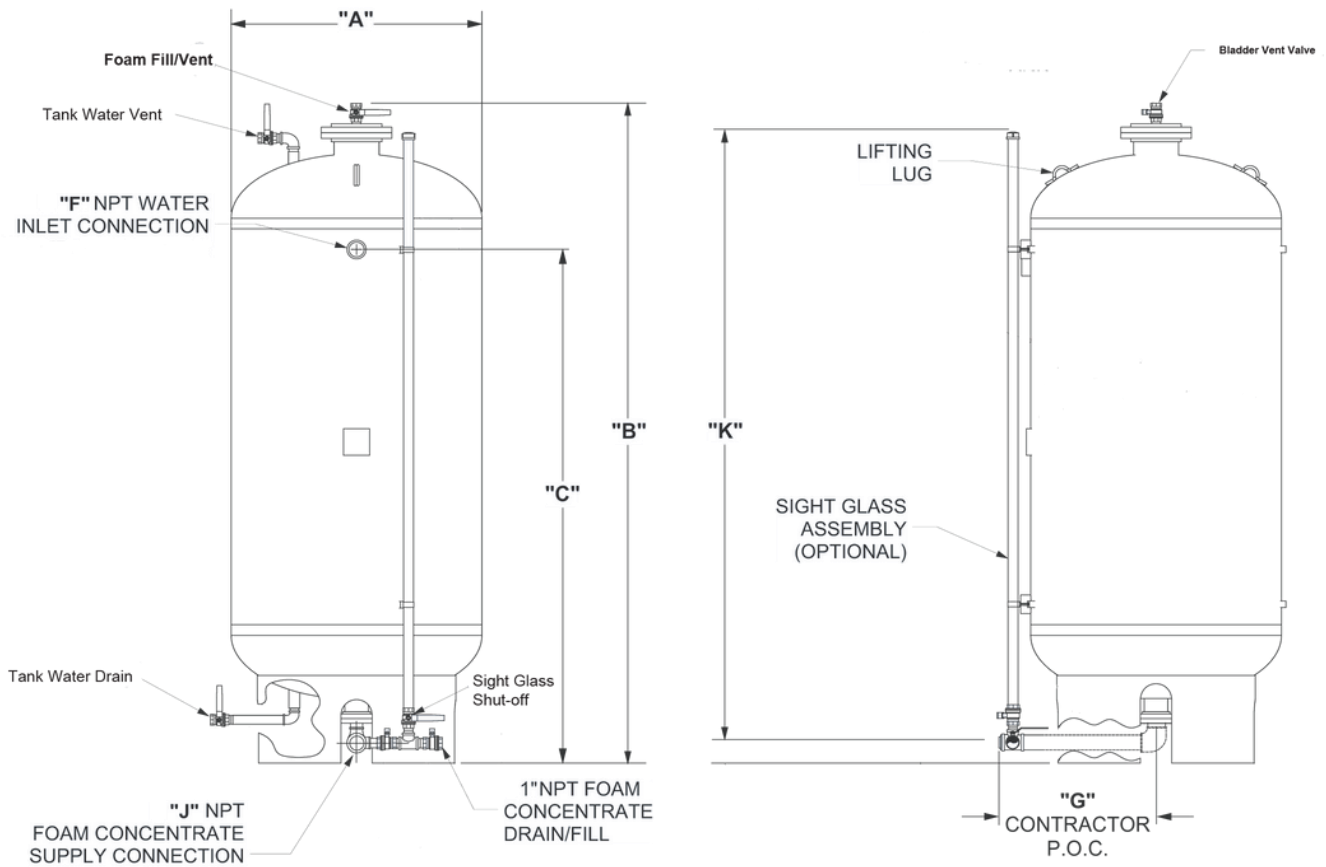
AMESH Pre-Pipped bladder tanks includes a bladder tank for foam concentrate storage, an appropriate proportioner which automatically proportions over a wide range of flow and pressure.

AMESH Pre-Pipped bladder tank system is consists of a steel bladder tank, which is fitted with an appropriate internal bladder that stores foam concentrate. During operation, water supplied from the system fills the area outside of the bladder causing the bladder to collapse until the concentrate is discharged. The Foam Concentrate is pressurized to the foam proportioner ( ) with the same supplied water pressure at the water inlet connection at the tank.

The vertical tanks is supported by four legs (skirt is optional) with provision for anchoring. The horizontal tank are supported with saddles welded to the tank and drilled to provide provision for anchoring. Both tank models are provided with lifting lugs.

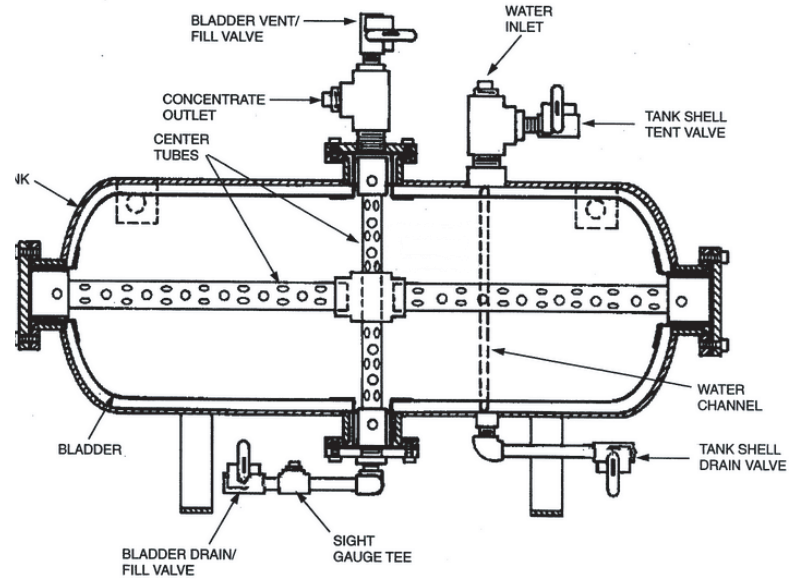
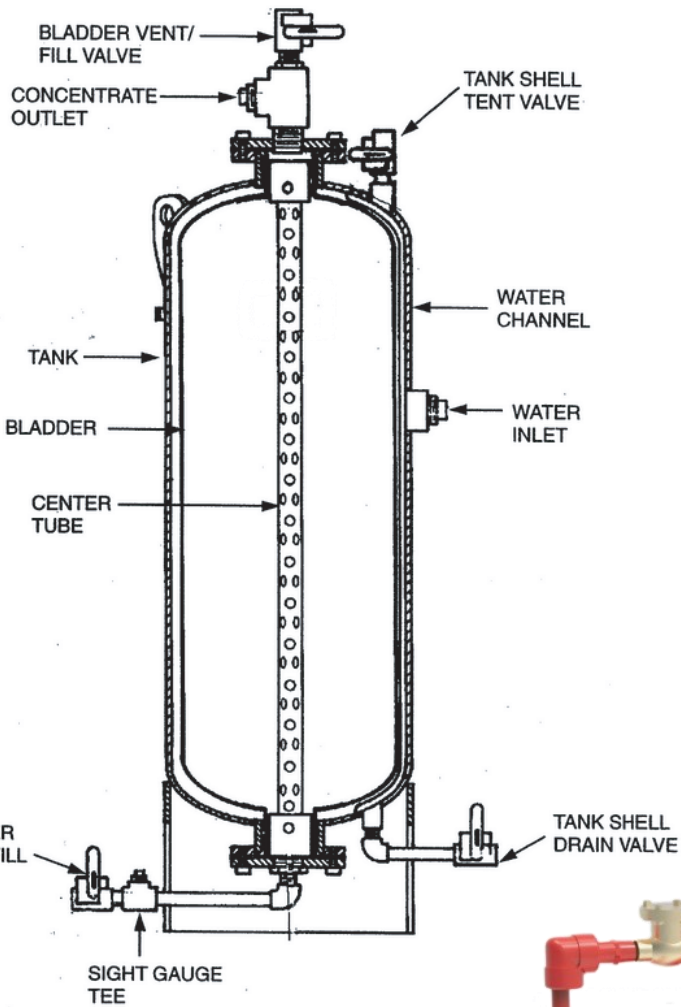
TECHNICAL SPECIFICATIONS

Tank Mounting Type	Vertical or Horizontal
Concentrate Storage Capacity	Vertical type capacity range 25-2000 gallons. Horizontal type capacity range 25-4000 gallons.
Maximum Working Pressure	175 PSI (12 bar)
Hydrostatically Test Pressure	250 PSI (18 bar)
Vessel Construction Code	Carbon Steel, as per ASME Code Section VIII Div I, for unfired pressure vessels
Bladder Construction	Flexible Nylon reinforced Buna-N rubber, with 1.4mm Thick
Foam Proportioner	Bronze, Threaded or flanged types.
Vent/Drain Valves	Ball valve with locking handles, bronze material and brass/nickel plated ball valves.
Level Device	sight Glass 25mm with bronze ball shut-off valve (Level gauge is optional)
Foam Compatibility	Compatible with any type of foam concentrate. (UL Listed)
Finish	Red High solids epoxy finish



CAPACITY GALLONS (LITERS)	"A"	"B"	"C"	"D"	"E"	"F"	"G"	"H"	"J"	"K"	WEIGHT LBS. (KGS)
25 (95)	24 (610)	41 (1042)	29 (737)	22-3/4 (578)	9/16 (14)	2 (51)	15-1/4 (387)	4 (102)	2 (51)	36 (914)	150 (68)
36 (136)	24 (610)	50 (1270)	25 (635)	22-3/4 (578)	9/16 (14)	2 (51)	17-1/4 (438)	4 (102)	2 (51)	37 (940)	220 (100)
50 (189)	24 (610)	58 (1473)	33 (838)	22-3/4 (578)	9/16 (14)	2 (51)	17-1/4 (438)	4 (102)	2 (51)	45 (1143)	307 (139)
100 (379)	24 (610)	87 (2210)	62 (1575)	22-3/4 (578)	9/16 (14)	2 (51)	17-1/4 (438)	4 (102)	2 (51)	74 (1880)	465 (211)
150 (568)	30 (762)	86 (2184)	59 (1499)	27-3/4 (705)	9/16 (14)	2 (51)	20-1/4 (514)	4 (102)	2 (51)	73 (1854)	620 (281)
200 (757)	30 (762)	104 (2642)	77 (1956)	27-3/4 (705)	9/16 (14)	2 (51)	20-1/4 (514)	4 (102)	2 (51)	91 (2311)	757 (343)
300 (1136)	36 (914)	108 (2743)	80 (2032)	32-3/4 (832)	9/16 (14)	2 (51)	23-1/4 (591)	4 (102)	2 (51)	95 (2413)	1101 (499)
400 (1514)	48 (1219)	91 (2311)	59-1/2 (1511)	41-1/2 (1054)	11/16 (17)	2 (51)	29-1/4 (743)	4 (102)	2 (51)	78 (1981)	1504 (682)
500 (1892)	48 (1219)	105 (2667)	73-1/2 (1867)	41-1/2 (1054)	11/16 (17)	2 (51)	29-1/4 (743)	4 (102)	2 (51)	92 (2337)	1560 (709)
600 (2271)	48 (1219)	120 (3048)	88-1/2 (2248)	41-1/2 (1054)	11/16 (17)	3 (76)	29-1/4 (743)	4 (102)	2 (51)	107 (2718)	1669 (757)
700 (2649)	48 (1219)	134 (3404)	102-1/2 (2604)	41-1/2 (1054)	11/16 (17)	3 (76)	29-1/4 (743)	4 (102)	3 (76)	121 (3073)	1799 (816)
750 (2839)	48 (1219)	142 (3607)	110-1/2 (2807)	51-1/2 (1308)	11/16 (17)	3 (76)	29-1/4 (743)	8 (203)	3 (76)	125 (3175)	1900 (862)
800 (3028)	60 (1524)	113 (2870)	78-1/2 (1994)	51-1/2 (1308)	11/16 (17)	3 (76)	35-3/4 (908)	8 (203)	3 (76)	96 (2438)	2004 (909)
900 (3407)	60 (1524)	122 (3099)	87-1/2 (2223)	51-1/2 (1308)	11/16 (17)	3 (76)	35-3/4 (908)	8 (203)	3 (76)	105 (2667)	2334 (1059)
1000 (3785)	60 (1524)	132 (3353)	97-1/2 (2477)	51-1/2 (1308)	13/16 (21)	3 (76)	35-3/4 (908)	8 (203)	3 (76)	115 (2921)	2730 (1238)
1100 (4164)	60 (1524)	141 (3581)	106-1/2 (2705)	51-1/2 (1308)	13/16 (21)	3 (76)	35-3/4 (908)	8 (203)	3 (76)	124 (3150)	3823 (1734)
1200 (4542)	60 (1524)	150 (3810)	115-1/2 (2934)	51-1/2 (1308)	13/16 (21)	3 (76)	35-3/4 (908)	8 (203)	3 (76)	133 (3378)	3221 (1461)
1300 (4921)	60 (1524)	160 (4064)	125-1/2 (3188)	51-1/2 (1308)	13/16 (21)	3 (76)	35-3/4 (908)	8 (203)	3 (76)	143 (3632)	3340 (1515)

Dimensions are approximate and subject to changes without notice





+1(347)5194201
+1(347)6545356
413 ANNADALE RD
STATEN ISLAND NY 10312
USA